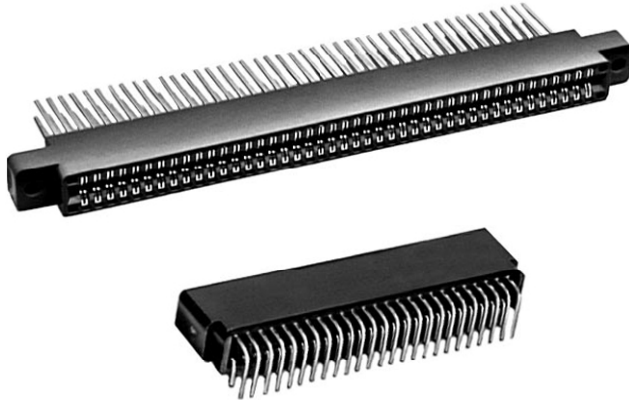


Edgeboard Connectors, Dual Readout, 0.125" (3.17 mm) C-C, Standard and Right Angle Terminals



ELECTRICAL SPECIFICATIONS

Current Rating: 3 A

Test Voltage Between Contacts:

At sea level: 1500 V_{RMS}

At 70 000 feet (21 336 meters): 325 V_{RMS}

Insulation Resistance: 5000 MΩ minimum at 500 V_{DC} potential

Contact Resistance: 30 mV maximum at rated current (with gold plating)

Operating Temperature: - 65 °C to + 125 °C

Humidity: 96 h at 90 % relative humidity at + 40 °C, dried at room temperature for 3 h minimum, insulation resistance was greater than 5000 MΩ

Durability: After 500 cycles of insertion and withdrawal of a 0.070" (1.78 mm) thick steel test board, contact resistance less than 0.030 V at 3 A on gold plated contacts and individual contact pair separation force when measured with a 0.054" (1.37 mm) thick steel test blade was greater than ½ oz.

Shock: Three 50G shocks in each of 3 mutually perpendicular planes with no loss of continuity

Vibration: 2 h in each of 3 mutually perpendicular planes, frequency sweep 10 cps to 55 cps at 0.06 double amplitude with no loss of continuity

FEATURES

- Grid Patterns: 0.125" C-C x 0.150" (3.17 mm x 3.81 mm), 0.125" C-C x 0.200" (3.17 mm x 5.08 mm) and 0.125" C-C x 0.250" (3.17 mm x 6.35 mm)
- Standard and right angle terminals
- Greater design latitude:
4 body materials: Diallyl phthalate, phenolic, glass-filled polyester and glass-filled polyphenylene sulfid
7 contact termination styles - 3 standard, 4 right angle
19 body sizes and 6 mounting styles
- Selective gold plating
- Accepts PC board thickness of 0.054" to 0.071" (1.37 mm to 1.80 mm)
- Polarization between contact positions in all sizes.
Between contact polarization permits polarizing without loss of contact position.
- **Recognized under the Component Program of Underwriters Laboratories, Inc. listed under file E65524, project 77CH3889**

APPLICATIONS

For use with 0.0625" (1.59 mm) printed circuit boards requiring an edgeboard type connector on 0.125" (3.17 mm) centers

MATERIAL SPECIFICATIONS

Body Material:

"1" glass-filled diallyl phthalate per MIL-M-14, Type SDG-F green, flame retardant (UL 94 V-0)

"2" glass-filled phenolic per MIL-M-14, Type MFH dark green, flame retardant (UL 94 V-0)

"3" thermoplastic polyester, glass-filled, black, flame retardant (UL 94 V-0)

"5" thermoplastic polyphenylene sulfid, glass filled, brown, flame retardant (UL 94 V-0)

Contacts: Phosphor bronze (See Ordering Information)

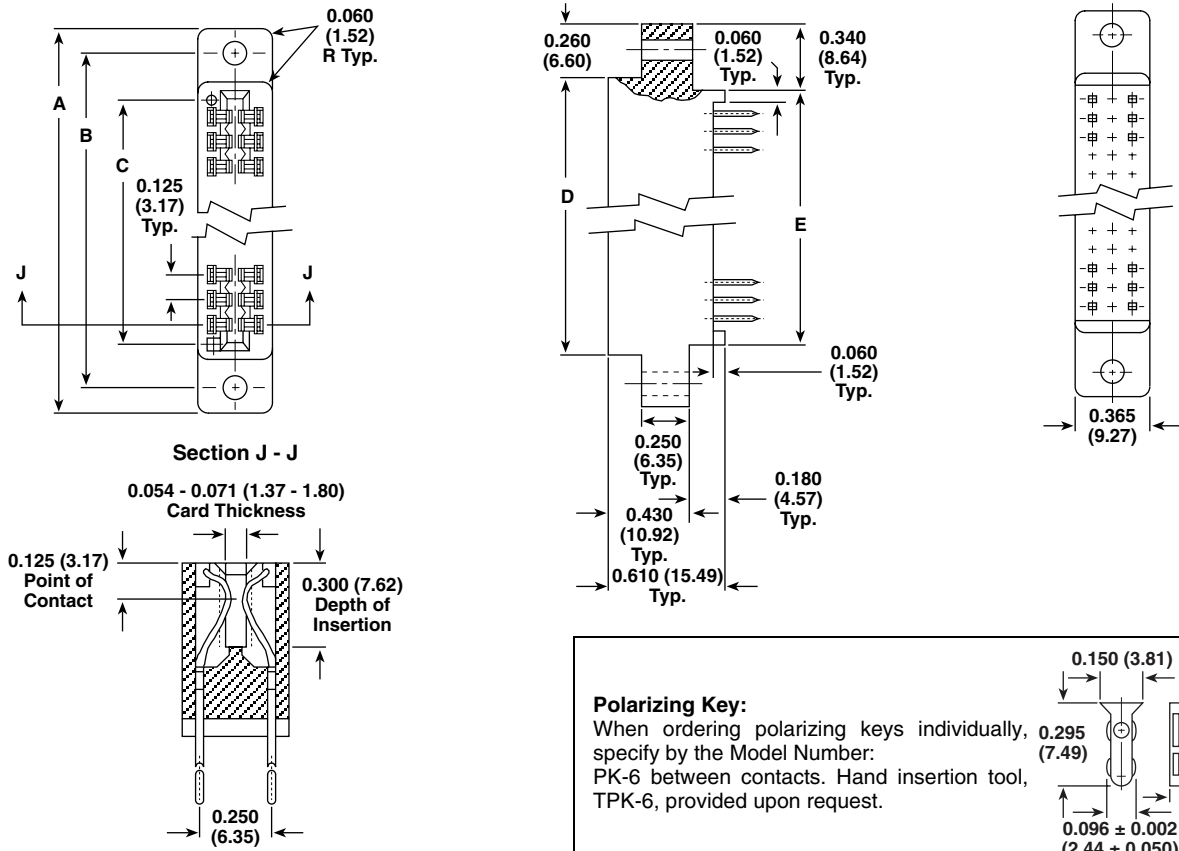
Polarizing Key: Glass reinforced nylon, flame retardant (UL 94H-B)

Plating: Gold (See Ordering Information)

ORDERING INFORMATION

EB6	3	K	40	SG	X	15
MODEL	BODY MATERIAL	STANDARD TERMINAL VARIATIONS	CONTACTS PER SIDE	CONTACT PLATING	MOUNTING VARIATIONS	POLARIZING KEY POSITIONS
	1 = Diallyl Phthalate	C, D, K,	6, 10, 12,	SG = Selective gold plating (0.00003" (0.000762 mm) minimum thick) on contact area with gold flash on terminal.		Key(s) are located to right of position(s) designated. Use odd-numbered contact for ordering: -1, -3, -5, etc. Required only when polarizing keys are to be factory installed. Note: To order polarizing keys individually, specify Model PK-6.
	2 = Phenolic	1R, 2R,	14, 15, 18,	SGF = Selective gold plating (0.000010" (0.000254 mm) minimum thick) on contact area with gold flash on terminal.		
	3 = Glass-filled Polyester	3R, 4R	22, 24, 25,	All gold plating over 0.00005" (0.00127 mm) minimum nickel underplate.		
	5 = Glass-filled Polyphenylene Sulfid		28, 30, 31,	Contact factory for additional plating options.		
			32, 35, 36,			
			40, 43, 44,			
			49, and 50			

DIMENSIONS in inches (millimeters)



Polarizing Key:
 When ordering polarizing keys individually, specify by the Model Number: PK-6 between contacts. Hand insertion tool, TPK-6, provided upon request.

# OF CONTACT POSITIONS PER SIDE	A	B	C	D	E
6	1.555 (39.50)	1.295 (32.89)	0.875 (22.22)	1.035 (26.29)	0.875 (22.22)
10	2.055 (52.20)	1.795 (45.59)	1.375 (34.92)	1.535 (38.99)	1.375 (34.92)
12	2.305 (58.55)	2.045 (51.94)	1.625 (41.28)	1.785 (45.34)	1.625 (41.28)
14	2.555 (64.90)	2.295 (58.29)	1.875 (47.62)	2.035 (51.69)	1.875 (47.62)
15	2.680 (68.07)	2.420 (61.47)	2.000 (50.80)	2.160 (54.86)	2.000 (50.80)
18	3.055 (77.60)	2.795 (70.99)	2.375 (60.32)	2.535 (64.39)	2.375 (60.32)
22	3.555 (90.30)	3.295 (83.69)	2.875 (73.02)	3.035 (77.09)	2.875 (73.02)
24	3.805 (96.65)	3.545 (90.04)	3.125 (79.38)	3.285 (83.44)	3.125 (79.38)
25	3.930 (99.82)	3.670 (93.22)	3.250 (82.55)	3.410 (86.61)	3.250 (82.55)
28	4.305 (109.35)	4.045 (102.74)	3.625 (92.08)	3.785 (96.14)	3.625 (92.08)
30	4.555 (115.70)	4.295 (109.09)	3.875 (98.42)	4.035 (102.49)	3.875 (98.42)
31	4.680 (118.87)	4.420 (112.27)	4.000 (101.60)	4.160 (105.66)	4.000 (101.60)
32	4.805 (122.05)	4.545 (115.44)	4.125 (104.78)	4.285 (108.84)	4.125 (104.78)
35	5.180 (131.57)	4.920 (124.97)	4.500 (114.30)	4.660 (118.36)	4.500 (114.30)
36	5.305 (134.75)	5.045 (128.14)	4.625 (117.48)	4.785 (121.54)	4.625 (117.48)
40	5.805 (147.45)	5.545 (140.84)	5.125 (130.18)	5.285 (134.24)	5.125 (130.18)
43	6.180 (156.97)	5.920 (150.37)	5.500 (139.70)	5.660 (143.76)	5.500 (139.70)
44	6.305 (160.15)	6.045 (153.54)	5.625 (142.88)	5.785 (146.94)	5.625 (142.88)
49	6.930 (176.02)	6.670 (169.42)	6.250 (158.75)	6.410 (162.81)	6.250 (158.75)
50	7.055 (179.20)	6.795 (172.59)	6.375 (161.92)	6.535 (165.99)	6.375 (161.92)

PHYSICAL SPECIFICATIONS

Contact Type: Bifurcated cantilever beam

Number of Contacts: 6, 10, 12, 14, 15, 18, 22, 24, 25, 28, 30, 31, 32, 35, 36, 40, 43, 44, 49, and 50 per side

Contact Terminal Variation: Standard terminals

Type "C" - dip solder, 0.025" (0.635 mm) square terminals, 0.175" (4.44 mm) nominal terminal length below standoffs

Type "D" - dip solder, 0.025" (0.635 mm) square terminals, 0.115" (2.92 mm) nominal terminal length below standoffs

Type "K" - Wire Wrap™, 0.025" (0.635 mm) square terminals, 0.570" (14.48 mm) nominal terminal length below standoffs

Contact Terminal Variation: Right angle terminals

Type "1R" - dip solder, 0.025" (0.635 mm) square terminals, 0.120" (3.05 mm) nominal terminal length x 0.150" (3.81 mm) nominal terminal row spacing

Type "2R" - dip solder, 0.025" (0.635 mm) square terminals, 0.120" (3.05 mm) nominal terminal length x 0.200" (5.08 mm) nominal terminal row spacing

Type "3R" - dip solder, 0.025" (0.635 mm) square terminals, 0.180" (4.57 mm) nominal terminal length x 0.150" (3.81 mm) nominal terminal row spacing

Type "4R" - dip solder, 0.025" (0.635 mm) square terminals, 0.180" (4.57 mm) nominal terminal length x 0.200" (5.08 mm) nominal terminal row spacing

Contact Spacing: 0.125" (3.17 mm) center to center

Contact Terminal Row Spacing: Standard - 0.250" (5.08 mm) nominal. Right angle - 0.200" (5.08 mm) nominal and 0.150" (3.81 mm) nominal

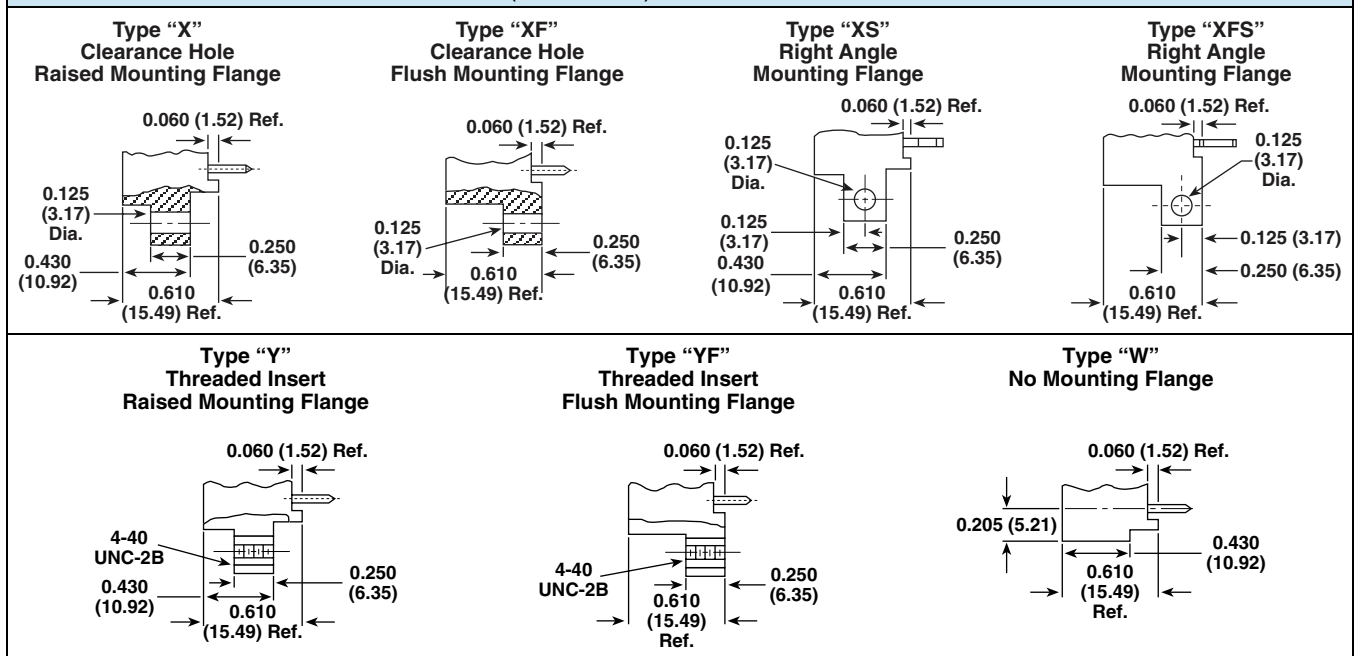
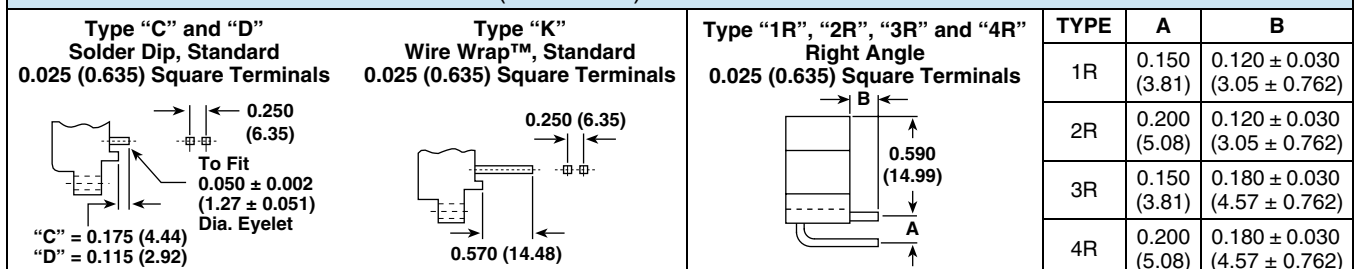
Card Thickness: 0.054" to 0.071" (1.37 mm to 1.80 mm)

Card Slot Depth: 0.300" (7.62 mm)

Connector Polarization: Between contact polarization key(s) are located to the right of the contact position(s) designated

Note

- High temperature burn-in, edgeboard connectors, with 0.125" (3.17 mm) center to center are on www.vishay.com/doc?36006

MOUNTING VARIATIONS in inches (millimeters)

TERMINAL VARIATIONS in inches (millimeters)




Disclaimer

All product specifications and data are subject to change without notice.

Vishay Intertechnology, Inc., its affiliates, agents, and employees, and all persons acting on its or their behalf (collectively, "Vishay"), disclaim any and all liability for any errors, inaccuracies or incompleteness contained herein or in any other disclosure relating to any product.

Vishay disclaims any and all liability arising out of the use or application of any product described herein or of any information provided herein to the maximum extent permitted by law. The product specifications do not expand or otherwise modify Vishay's terms and conditions of purchase, including but not limited to the warranty expressed therein, which apply to these products.

No license, express or implied, by estoppel or otherwise, to any intellectual property rights is granted by this document or by any conduct of Vishay.

The products shown herein are not designed for use in medical, life-saving, or life-sustaining applications unless otherwise expressly indicated. Customers using or selling Vishay products not expressly indicated for use in such applications do so entirely at their own risk and agree to fully indemnify Vishay for any damages arising or resulting from such use or sale. Please contact authorized Vishay personnel to obtain written terms and conditions regarding products designed for such applications.

Product names and markings noted herein may be trademarks of their respective owners.